



WORLD
RESOURCES
INSTITUTE

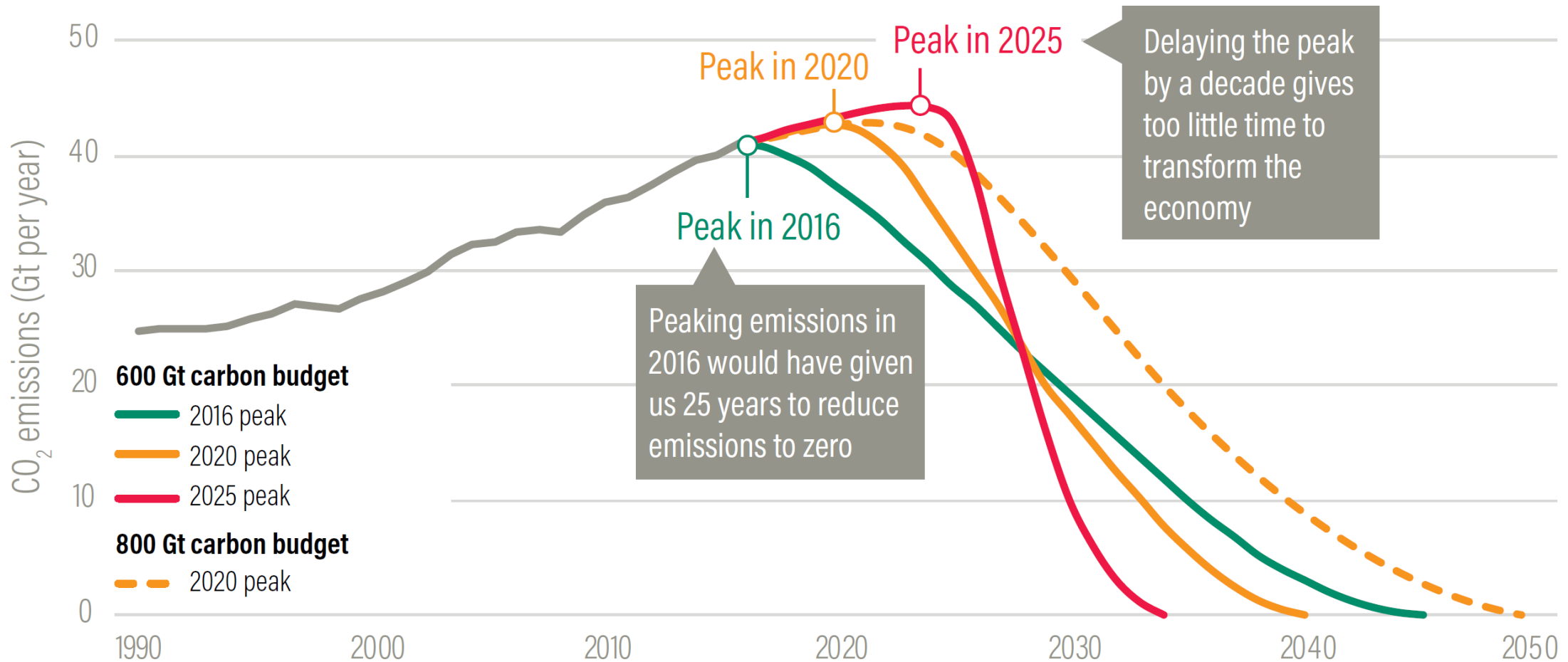
Target Setting

City Energy and Climate Action: How To Set Targets And Develop A Plan

A training event by the International Urban Cooperation (IUC) and Global Covenant of Mayors for Climate and Energy (GCOM) at the Ninth World Urban Forum in Kuala Lumpur

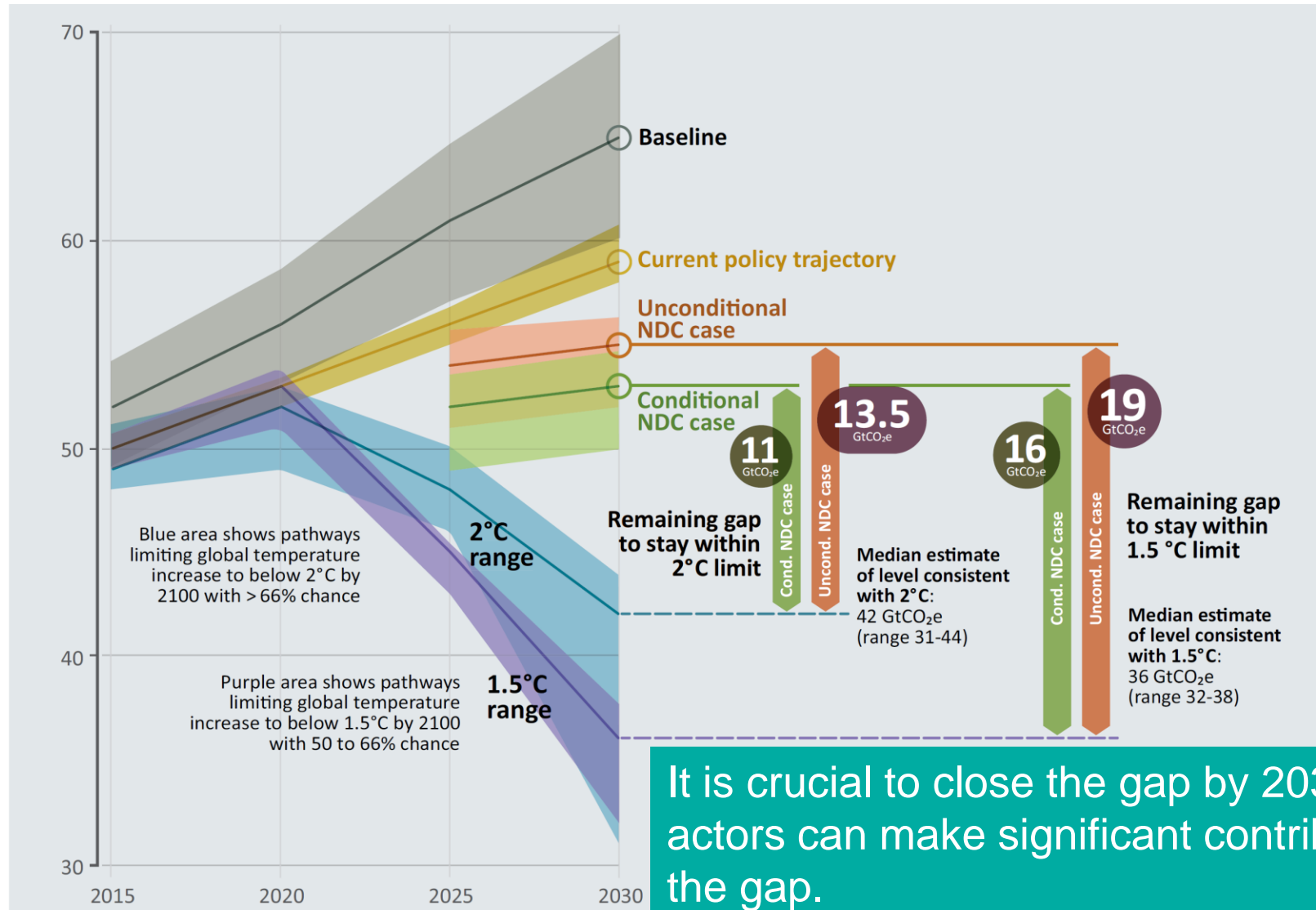
Wee Kean Fong, World Resources Institute

GLOBAL EMISSIONS PEAK



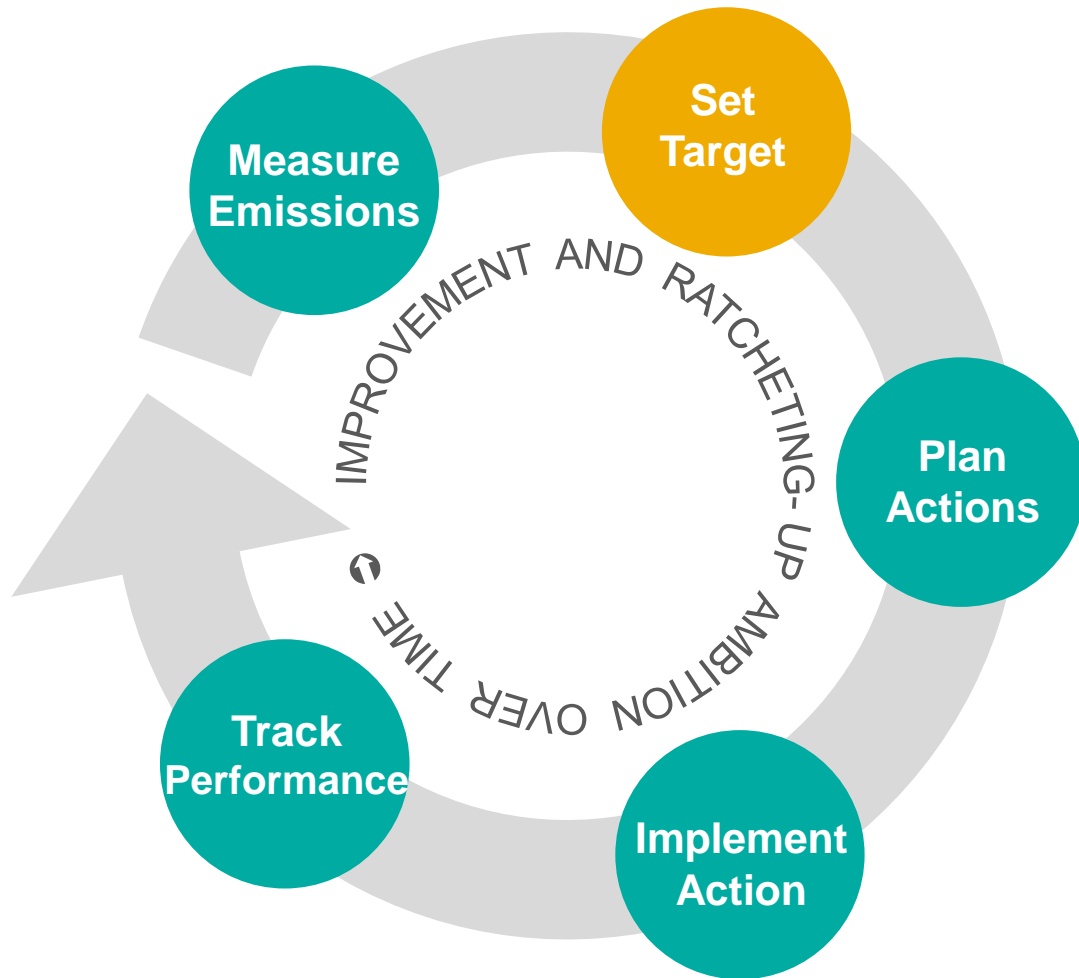
In order to have a chance of staying within the 2°C limit with a likely probability for the least cost, the global GHG emissions need to peak by 2020 at the latest.

EMISSIONS GAP



It is crucial to close the gap by 2030. Subnational actors can make significant contribution to closing the gap.

LOW CARBON PLANNING PROCESS



- Define the target
- Define the accounting methods for tracking progress
- Calculate allowable emissions in the target year(s)
- Report progress toward meeting the target

BOUNDARY OF THE TARGET

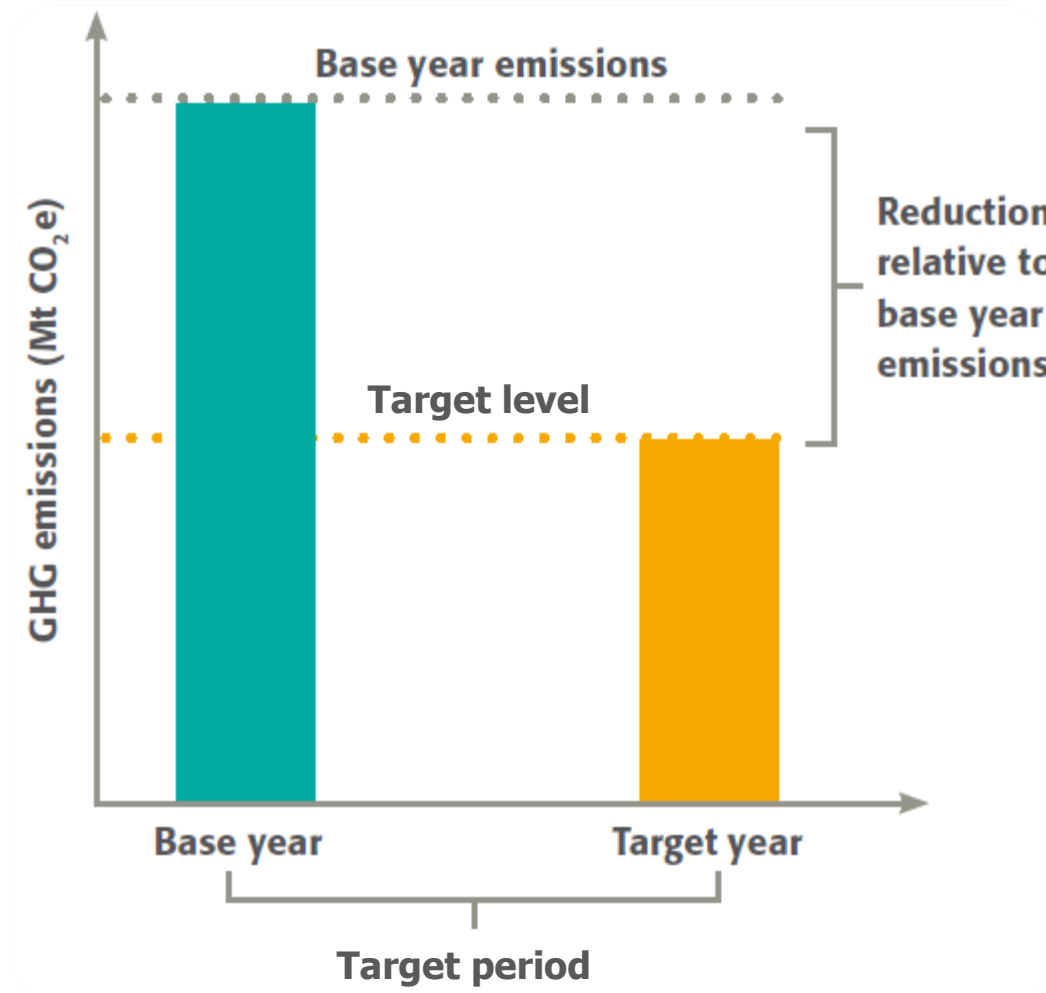
- Geographic boundary
- In-boundary and out-of-boundary emissions
- Sectors
- Greenhouse gases



TYPICAL TYPES OF TARGET

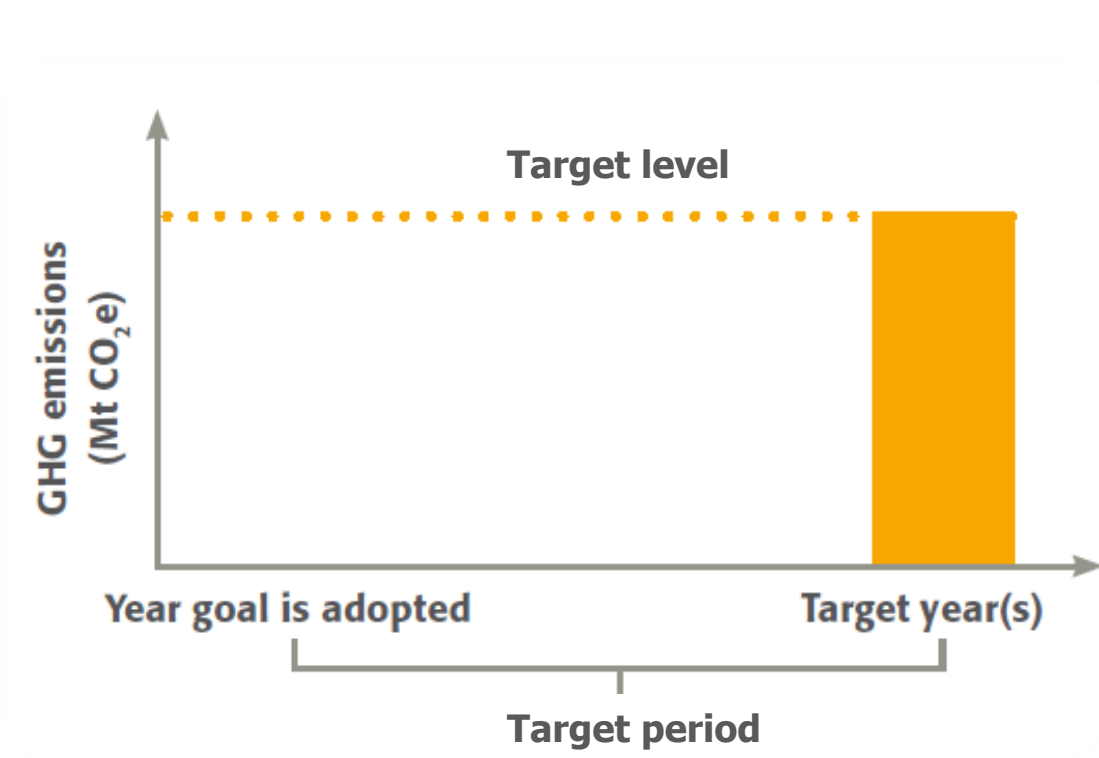
- Base year emission target
- Fixed level target
- Base year intensity target
- Baseline scenario target

1. BASE YEAR EMISSION TARGET



- **New York City**: 80% reduction in greenhouse gas emissions by 2050 from 2005 levels
- **Tokyo**: 30% reduction in greenhouse gas emissions by 2030 from 2000 levels

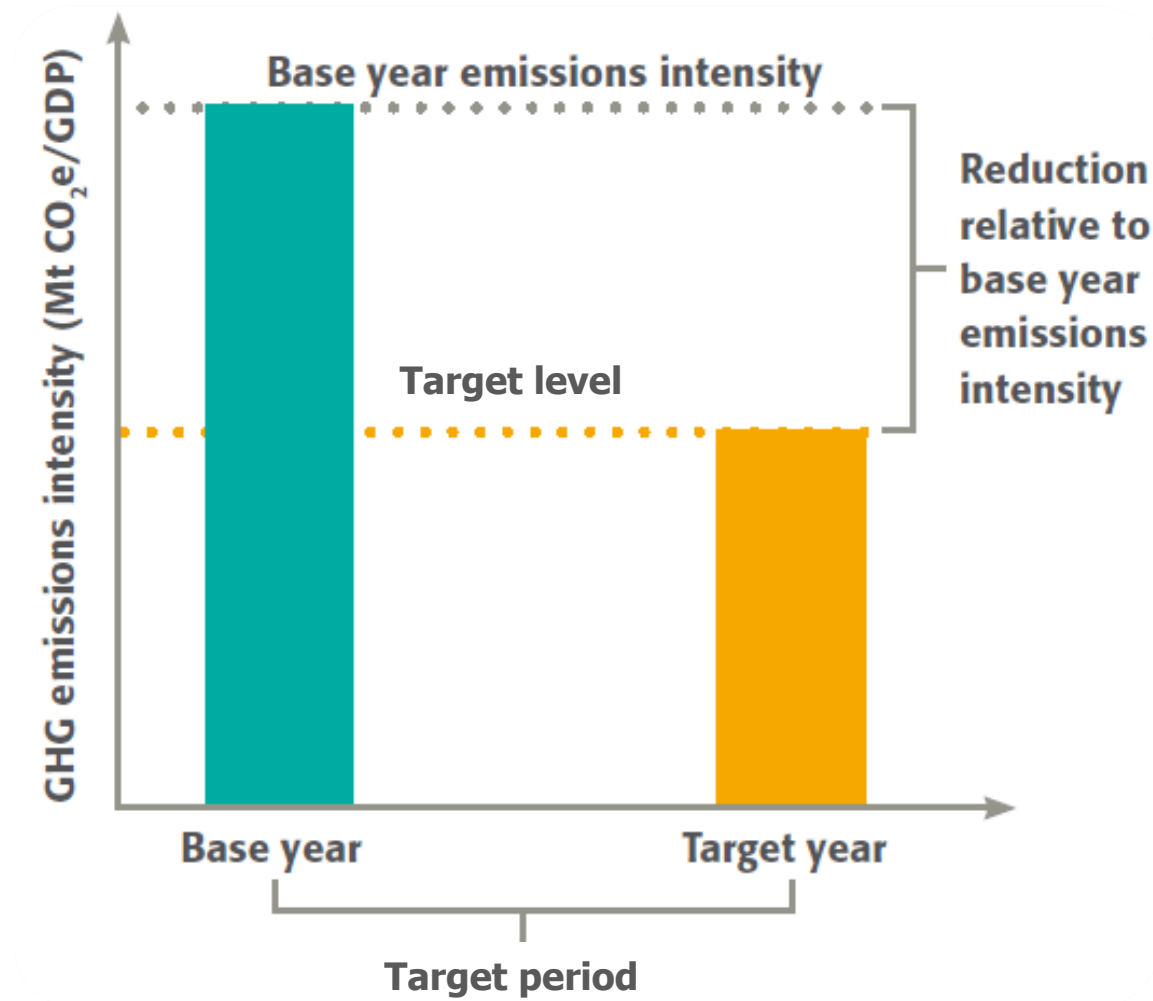
2. FIXED LEVEL TARGET



Copenhagen:

Carbon neutrality in 2025

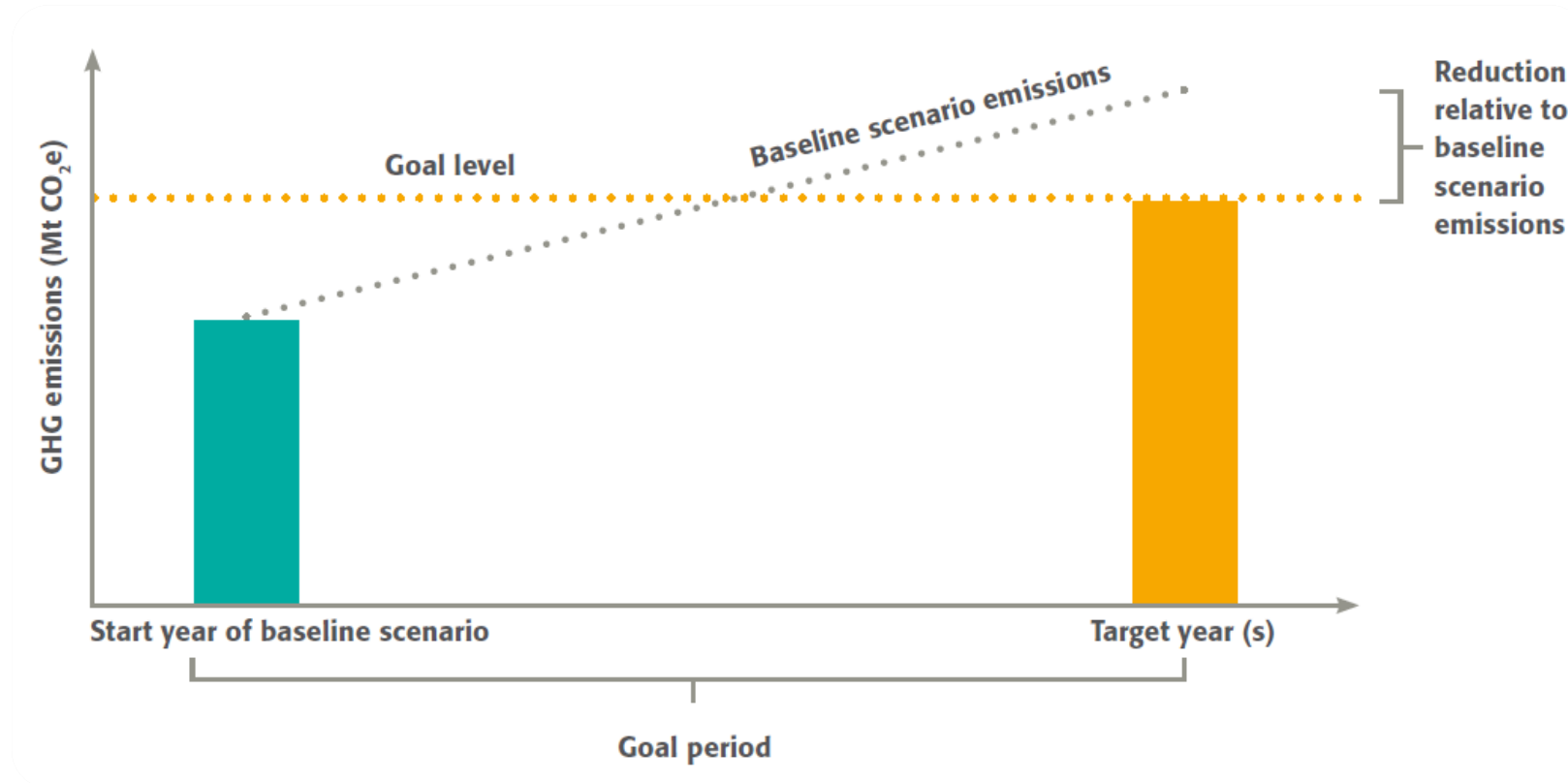
3. BASE YEAR INTENSITY TARGET



Iskandar Malaysia

58% reduction in greenhouse gas emissions intensity by 2025 compared to 2005 levels

4. BASELINE SCENARIO TARGET



EMISSIONS PEAKING TARGET

