

World Urban Forum 2018

Global Covenant of Mayors for Climate and Energy Training session



**City Energy and Climate Action Plans:
How to set Targets and Develop a Plan**

Miriam Badino
Senior Officer, Low Carbon City – ICLEI World Secretariat
11 February 2018

FORUM BANDAR SEDUNIA



KUALA LUMPUR • 7-13 FEB 2018

- **Overview: Covenant of Mayors Sub-Saharan Africa (CoM SSA)**



Covenant of Mayors Office for Sub-Saharan Africa

Objective: increase the capacities of Sub-Saharan African cities to provide access to sufficient, sustainable, affordable and clean energy services to urban and peri-urban populations (especially the most vulnerable).

Covenant of Mayors in Sub-Saharan Africa (CoM SSA)

Initiative to Support Sub-Saharan African Cities to tackle climate change.

Focus on climate Mitigation, Adaptation and Access to energy

Voluntary commitment of local authorities

CoM SSA project (Dec2015-Nov2019)

Funded by the European Union.



Covenant of Mayors
in Sub-Saharan Africa

Pilot Cities



- Tsevie, Togo
- Zou, Benin
- Bouake, Cote d'Ivoire
- Dakar, Senegal
- Pekine, Senegal
- Nouakchott, Mauritania
- Lubumbashi, DR Congo
- Kampala, Uganda

Covenant of Mayors in Sub-Saharan Africa (CoM SSA)

Project's consortium:

- 6 City Networks: Council of European Municipalities and Regions (CEMR) as project coordinators; ICLEI WS; ICLEI AS; Climate Alliance; Energy Cities; United Council of Local Governments Africa (UCLGA)
- 3 Institutional Organisations: French Agency for Environment and Energy Management (ADEME); International Association of Francophone Mayors (AIMF); Portuguese Energy Agency (ADENE)
- 2 NGOs: Environmental Development Action in the third world (ENDA); Sustainable Energy for Africa (SEA)

The project's website is still under construction and partly functional.

<http://comssa.org/>



Covenant of Mayors
in Sub-Saharan Africa

General Objective & Activities

To increase the capacities of Sub-Saharan African cities to provide access to sufficient, sustainable, affordable and clean energy services to urban and peri-urban populations (especially the most vulnerable).

1

Project Coordination

2

Help Desk Functions

Information support to pilot cities and potential signatories

3

Adaptation from CoM EU

Integrate experience on CoM EU success factors to build sustainability

4

Political Advocacy and Networking

Enhancing institutional frameworks through vertical integration

5

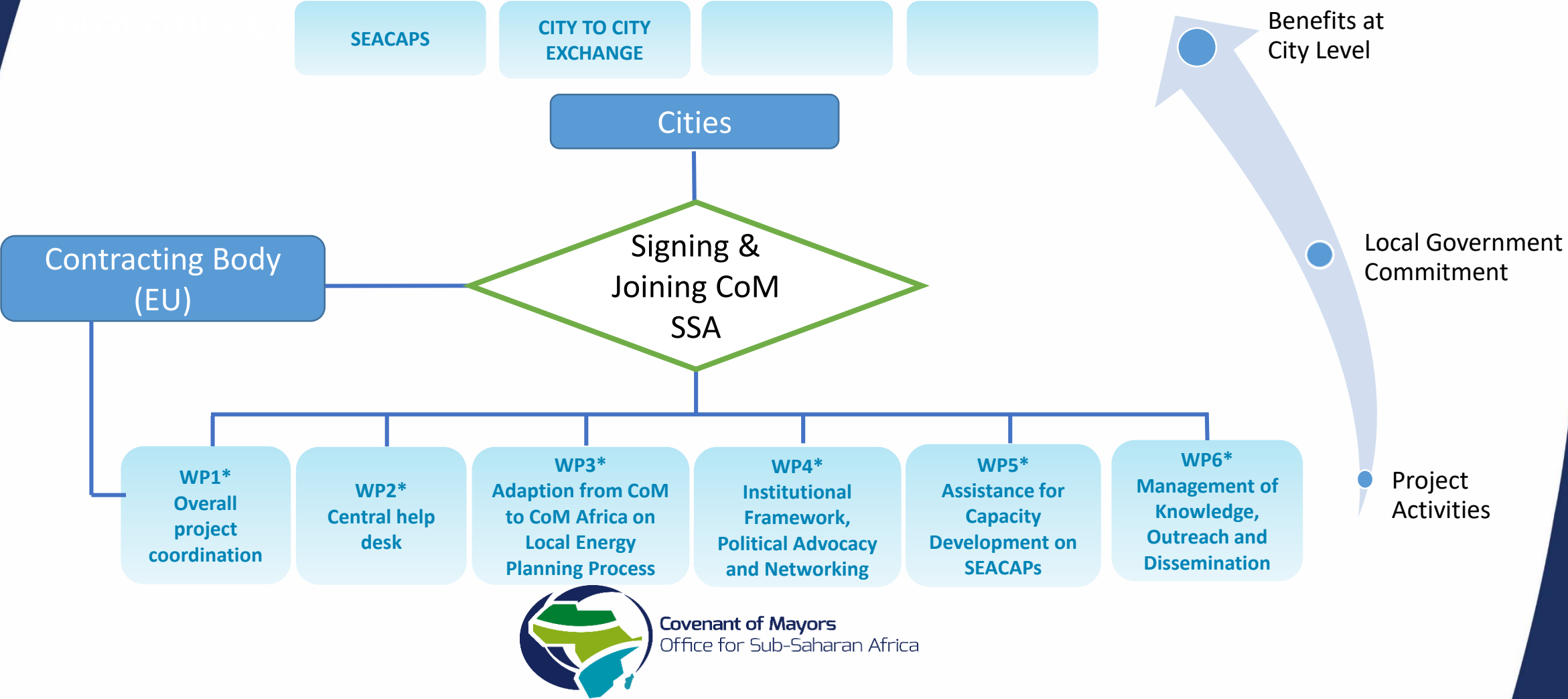
Technical Assistance to Develop SEACAP

Building technical capacity of pilot and potential Signatories

6

COMMUNICATION AND KNOWLEDGE SHARING

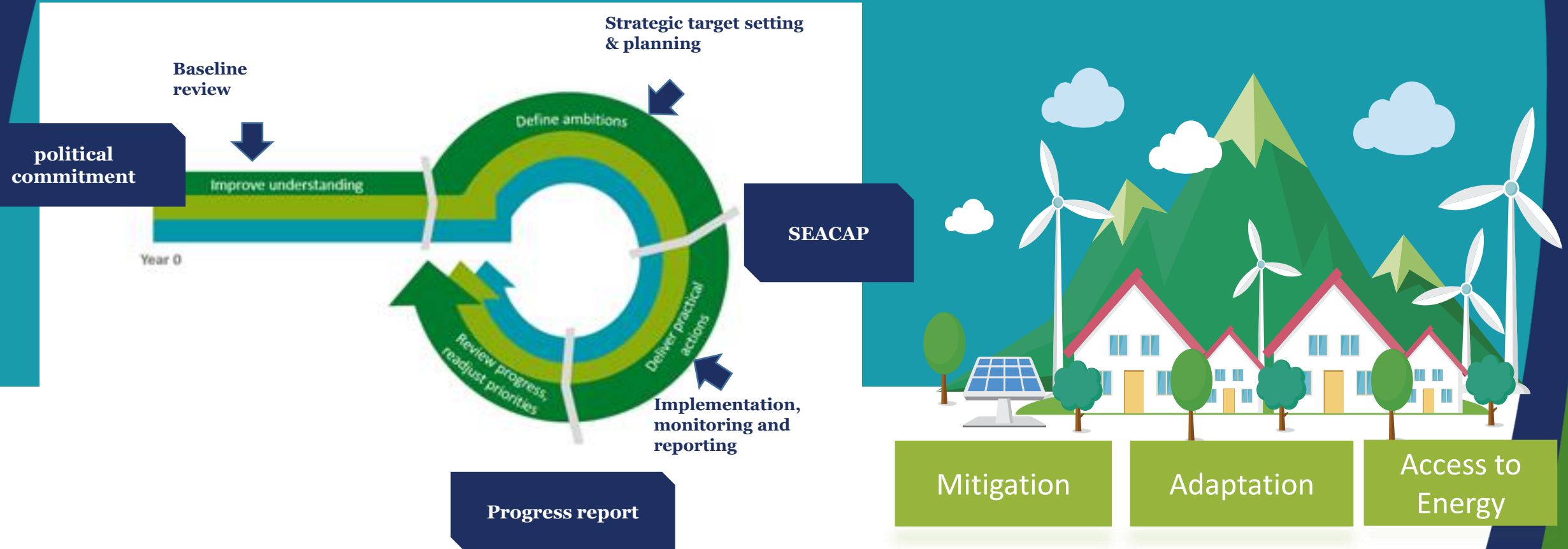
Implementation Process of CoM SSA



*WP (Work Package): The assistance/technical expertise available to support the cities is divided over 6 different work packages. Each work package is implemented by one team (group of people), as indicated next.

Development of SEACAP

(Sustainable Energy
Access and Climate Action Plans)



● Overview: Compact of Mayors



(before GCoM, it was) the world's largest cooperative effort among mayors and city officials to reduce greenhouse gas emissions and climate risks in cities.

Establishing a common platform to capture the impact of cities' collective actions

Standardized measurement of emissions and climate risk

Consistent, public reporting of their efforts

To be fully compliant with the Compact of Mayors, cities commit to taking action in three phases, with requirements covering both climate mitigation and adaptation.

Mitigation part

- Demonstrate how the LG plans to deliver on its commitments to reduce GHG emissions
- baseline
- target and the target year
- strategies
- Ideally also trends



Adaptation part

- Demonstrate how the LG plans to deliver on adaptation strategy
- How the LG will cope with current or future climate hazards
- Vulnerability assessment
- Identify stakeholders
- Political commitment



The Compact of Mayors “Action plan”

- Plan can be either an integrated (mitigation and adaptation) document or several documents (i.e. Sometimes vulnerability assessment is a separated document)
- Identify the documents according to the requirements (specially if it is in a foreign language)
- Public summary in English (preferably)



Action plan revision

- Logical development
- Rational assertions
- Availability
- Lifespan (long term? ...2020 and beyond)
- Integral approach
- Show political commitment



New Taipei City (Taiwan) – example (mitigation)



Environmental Protection Department
New Taipei City Government

Political Commitment from Mayor

Contents

Chapter 1 Introduction

- 1.1 Background
- 1.2 Vision
- 1.3 Leadership and Partnership
 - 1.3.1 Organizational structure
 - 1.3.2 Monitoring Plan

Chapter 2 GHG Emissions and Reduction Target

Chapter 3 Implementation Plan

- 3.1 Make Building Greener
 - 3.1.1 Green Doctor
 - 3.1.2 Constructed Wetland Management and Education
 - 3.1.3 Green Roof
 - 3.1.4 Green Home
 - 3.1.5 Urban Planning and Green Building Label
- 3.2 Take Transport more Smartly
 - 3.2.1 Low Emission Bus
 - 3.2.2 Triple-Loop and Triple-Line Mass Rapid Transit Systems
 - 3.2.3 User-friendly Cycling Infrastructure
 - 3.2.4 Car-free Day
 - 3.2.5 Intelligent EV and E-motor
 - 3.2.6 Carpooling Network

New Taipei City (Taiwan) – example (mitigation)

Illustration of Low-Carbon Lifestyle...Let's Act!



"Low-Carbon Lifestyle – Let's act!"

In the future, City of New Taipei expects to learn with other international cities, promotes international co-operation, broadens the city's international visibility and also hopes to promote it on the international stage.

New Taipei City Government engages our citizens to fight against climate change, and make our city more beautiful, livable, and sustainable on the basis of people-oriented approach.

Illustration

1.Aspects:

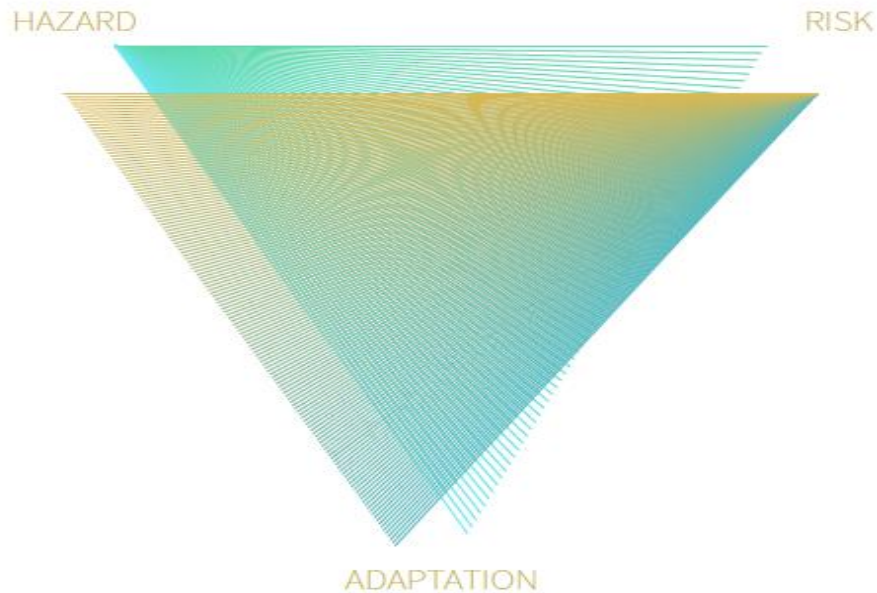
City of New Taipei's low-carbon strategy takes into account all the emission sectors such as residential buildings, commercial and institutional buildings and facilities, manufacturing industries and construction, agriculture, forestry and fishing activities, transportation, waste management, industrial processes and product uses and agriculture, forestry and other lands use. And the mitigation methods contain energy saving, energy efficiency, renewable energy shift and resource conservation etc.

2.Measures

The carbon reduction actions of City of New Taipei include 5 main aspects: greener buildings, smarter transport, cleaner energy, more efficient resources allocation and more sustainable life, which were planned and implemented comprehensively.

New Taipei City (Taiwan) – example (adaptation)

New Taipei City Climate Adaptation Action Plan (Abridged Edition)



CHAPTER 1 / Origin and Purpose **1**

CHAPTER 2 / Hazard Identification **2**

New Taipei City Environmental Status **2**
Hazard Identification Techniques **12**
Hazard Identification Achievement **13**

CHAPTER 3 / Risk and Vulnerability Assessment **18**

IPCC AR5 **18**
Risk and Vulnerability Assessment Techniques **19**
Risk and Vulnerability Assessment Outcome and
Comprehensive Analysis **20**

CHAPTER 4 / New Taipei City Adaptation Plan **38**

New Taipei City (Taiwan) – example (adaptation)

Most cities have been threatened by different climate-related disasters for a long period of time. In spite these city governments and communities have familiarized with these climate-related disasters and taken relevant actions, extreme events could become more frequent and intense under climate change while all cities must reexamine their protection actions and strategies.

The current and future possible types of hazards for New Taipei City have been identified on the basis of the City Climate Hazard Taxonomy provided by Compact of Mayors, which collects and consolidates all hazard related records, graphs and data, literature, and reports to analyze the potential of current and future hazards.



eThekweni (Durban, South Africa) – example (mitigation)



Title: Durban Climate Change Strategy

Final Version approved by Council

Date: September 2014

Approved by: Mr Derek Morgan and Dr Sean O'Donoghue

Contents

Contents	
Chapter 1: Introduction	
Chapter 2: Introduction to Durban	
Chapter 3: Durban's greenhouse gas emissions	
Chapter 4: Projected changes in Durban's climate and associated impacts	
Chapter 5: The policy context for Durban's Climate Change Strategy	
Chapter 6: Vision	
Chapter 7: Goals, objectives and responses	

eThekwini (Durban, South Africa) – example (adaptation)

February 2011

FINAL REPORT

Community-based Adaptation to Climate Change in Durban

Submitted to:
eThekwini Municipality
166 K E Masinga Road
Durban
4000

1.0	INTRODUCTION.....
2.0	OVERVIEW OF SUB-PROJECTS.....
2.1	Sub-project 1: Vulnerability assessment and adaptation planning.....
2.2	Sub-project 2: Food security pilot
2.3	Sub-project 3: Water harvesting feasibility assessment and pilot
3.0	SELECTED COMMUNITIES.....
4.0	SUB-PROJECT 1: VULNERABILITY ASSESSMENT AND ADAPTATION PLANNING
4.1	Social vulnerability assessment - methodology
4.1.1	Data collection and analysis.....
4.1.2	Quantitative data collection - survey

GCoM - Climate Action Plan and Access to Energy (CA/EA) subcommittee of the Data TWG

Progress so far (1/4)

- Comparison Compact of Mayors, EU Covenant of Mayors, CoM SSA, National requirements on Climate Action planning
- Climate Action Experts in the group (EC, ICLEI, C40, WRI, UNHabitat, coordinated by GCoM Secretariat)
- Drafted a **proposal on harmonized framework for Climate Action**

GCoM CA/EA subcommittee of DataTWG

Progress so far (2/4)

- **Recommendations on climate action planning requirements under GCoM** (compulsory, recommended, optional elements) will be sent to the Data TWG in a few days and ratified in March
 - Action Planning
 - Monitoring
 - Evaluation and Feedback



Example for mandatory elements:

- Describe the stakeholder engagement process in development of the plan and for each action
- clearly specify targets(s) and/or goal(s)
- address key sectors, in line with LGs priorities and assessments
- describe each action of the Action Plan document
- formally adopt the plan
- Describe the financial strategy per every action

GCoM CA/EA subcommittee of DataTWG

Progress so far (3/4)

Example for optional elements:

- Leave the possibility for neighboring local governments to develop a joint / collective action plan
- Allow GCoM signatories to request an extension of the submission deadline More related to the process than the action plan document as such.
- Include financial and energy figures for every action

Progress so far (4/4)

- (other) recommendations will be sent for **consultation to other Working Groups** in the same time
 - Level of detail of energy assessment to be included in the plan for each action
 - Indication of key/benchmarking actions
 - Monitoring and reporting timeline
 - Evaluation criteria for the plan
 - Public disclosure of the plan
 - Including the status of implementation for each action
- **Access to Energy** pillar, proposal is under development (regional-specific approach)
- **Consultation with city practitioners** will be conducted in March/April



Tools and Methodology

- GreenClimateCities (GCC) methodology
- Urban-LEDS I and II
- carbonn Climate Registry (cCR)
- Global Protocol for Community-Scale GHG Emission Inventories (GPC)
- Solutions Gateway
- Pool and Experts
- ClearPath
- Heat+
- CURB
- Compact of Mayors
- Compact of Mayors Sub-Saharan Africa (CoM SSA)
- 100% RE
- Building Efficiency Accelerator (BEA)
- EcoMobility
- TAP Potential



Useful Links

GreenClimateCities (GCC) Program

<http://www.iclei.org/activities/our-agendas/low-carbon-city/gcc.html>

Transformative Actions Program (TAP)

www.tap-potential.org

Global Protocol on Community-scale GHG Emissions Inventories (GPC)

www.ghgprotocol.org/city-accounting

Technical support for cities and local governments www.iclei.org/gcc

Pool of Experts

<http://tinyurl.com/pool-of-experts>

Solutions Gateway for Low Emission Development www.solutions-gateway.org



Questions? Connect with us!



@ICLEI



ICLEI World Secretariat



ICLEI



ICLEI Global



ICLEI-Local Governments for
Sustainability



www.iclei.org

<http://carbonn.org>

www.solutions-gateway.org



Miriam Badino
Senior Officer
Low Carbon Cities
ICLEI World Secretariat
miriam.badino@iclei.org