

How CDP supports cities to drive action on climate and the environment

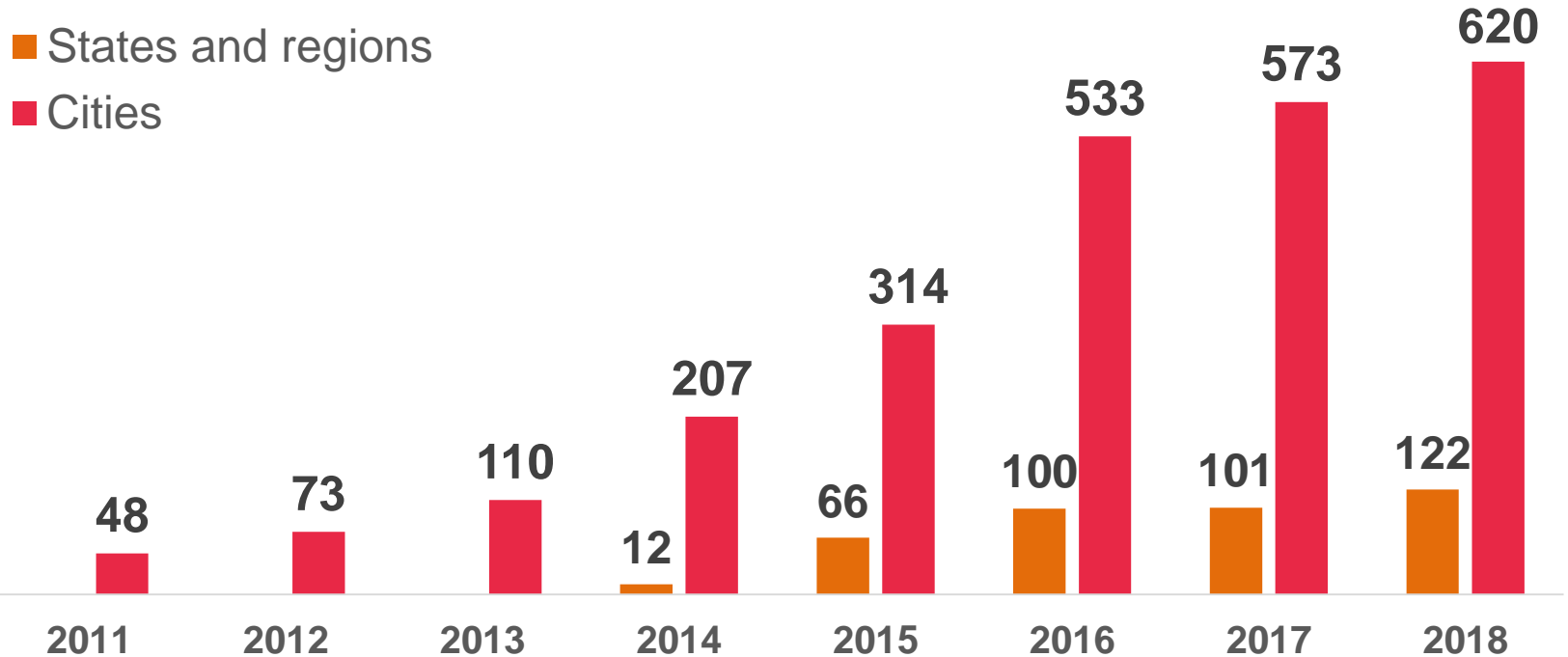
12 September 2018

Hanah Paik
Cities, States & Regions Lead,
Asia Pacific

Global environmental disclosure platform



Join the movement



Disclosure works



of first-time cities
disclosers have emissions
reduction targets



of second-time cities
disclosers have emissions
reduction targets



of third-time or more
cities disclosers have
emissions reduction targets

New CDP system

The image displays two overlapping screenshots of the CDP website. The top screenshot shows a questionnaire page titled "CDP Cities Questionnaire 2018". It features the CDP logo (Disclosure Insight Action) in the top left and a "Contact" link in the top right. The main content area contains a question: "If your city is committed to or planning to commit to the [Global Covenant of Mayors \(GCoM\)](#) this year, please select the option below. Otherwise, just click "Next"." Below the question is a radio button option labeled "Global Covenant of Mayors" which is selected. A red "Next" button is positioned at the bottom left of the question area.

The bottom screenshot shows a navigation menu on the left side of the website. The menu items are: "CDP Cities Questionnaire 2018", "CDP Disclosure Cycle 2018" (highlighted in blue), "Introduction", "Governance & Data Management", "Hazards and Adaptation", "Opportunities", "Local Government Emissions", "City-wide Emissions", "Strategy", "Water", "Important Information", and "Appendices". To the right of the menu is a page titled "CDP Cities Questionnaire 2018" with two red buttons: "Export to Word" and "Export to PDF". The main content area of this page is titled "CDP Cities Questionnaire 2018" and "CDP Disclosure Cycle 2018". It states: "We invite a reply to the following questions. The deadline for responses is 20th June 2018." Below this, it provides instructions on how to respond using the Online Response System (ORS) and provides an email address: cities@cdp.net. It also lists sources of support available to guide users in responding to the information request:

- **2018 Guidance Document** (to be released in March): This document provides a high-level overview of each section and question-level guidance on every question. The guidance provides information on the intent of each question as well as examples of good responses for selected questions.
- **In-ORS Guidance:** Within the ORS, there will be three levels of help and guidance in order to explain the purpose of each question:
 - Brief help text is provided below every question. This text will give you guidance on the intent of the question.
 - Clicking on the help icon above each question will show a pop-up window with information on how to respond.
 - More detailed guidance can be found by clicking the expandable link below the question. This link will display the full guidance and detailed information on how to respond, examples, links to documentation and scoring associated with the question.

Where does city data go?



Accessed by cities

City Snapshot Reports
Cities Analytics



Accessed by states & regions

SCAN Tool (Analytics)



Accessed through CDP

Public responses: cdp.net
Open data portal:
data.cdp.net
CDP global reports
Investors (Matchmaker)



Accessed by partners

Global Covenant of Mayors
UNFCCC, NAZCA
C40
ICLEI
The Climate Group
Academics

View public responses at cdp.net



CDP Cities 2015 Information Request
New York City

Module: Introduction

Page: Introduction

0.1

Please give a general description and introduction to your city including your city's boundary in the text box below.

New York is the most populous city in the United States and the center of the New York metropolitan area, one of the most populous significant impact upon commerce, finance, media, art, fashion, research, technology, education, and entertainment. The home of t

0.2

Emissions Accounting Choice

By checking the boxes below you are indicating that you have fuel and/or greenhouse gas (GHG) emissions data to report at this time.

Select 'Government' to report emissions from your local government operations (sometimes referred to as 'corporate' or 'municipal')

Select 'Community' to report emissions from the entire city area over which the city government can exercise a degree of influence t

Select both boxes to report fuel and/or emissions for both inventories.

IF YOU HAVE NO FUEL AND/OR GREENHOUSE GAS EMISSIONS TO REPORT DO NOT CHECK EITHER BOX.

Government
Community

Module: Governance

Page: City Details

0.3

Please provide information about your city's Mayor in the table below.

▶ Login to your account at cdp.net

▶ Search any city, company, region

▶ Responses available up to 2017

Cities data for free on our Open Data Portal at data.cdp.net



**2017 city-wide emissions. Size of circle indicates volume of emissions*

Cities Analytics to drive action

Planning

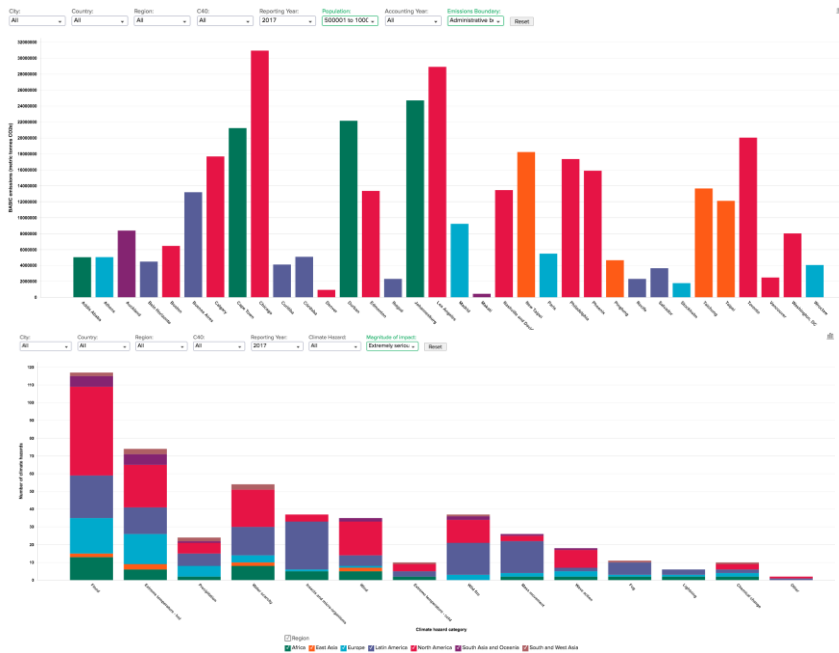
- ▶ Help inform your policy decision making
- ▶ Show where your city stands in comparison to other cities

Create more action

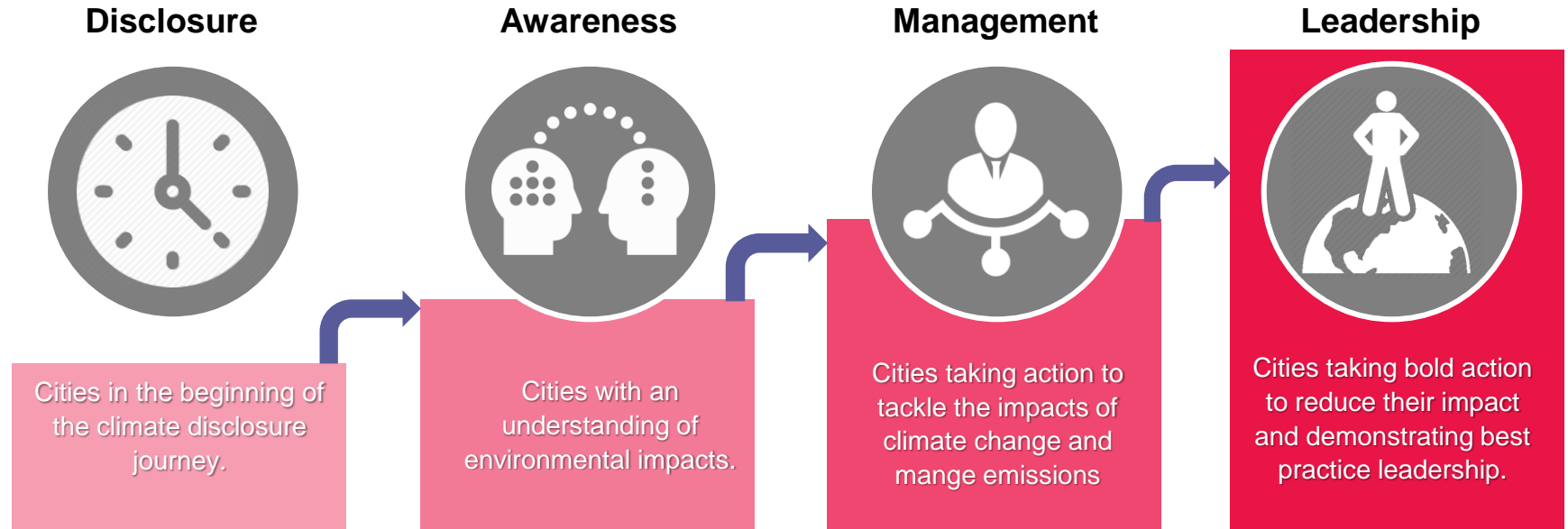
- ▶ Show the importance of investing in climate action
- ▶ Learn from other cities actions and implement new projects

Engagement

- ▶ Use as a marketing tool to engage your citizens
- ▶ Highlight your city's leadership



CDP feedback for cities



The Matchmaker database showcases projects



362 cities

Reported project data in 2017,
representing US\$52bn in
investment opportunity

Matchmaker subscribers

Investors, project developers,
engineering firms & financial market
participants



Questions?

hanah.paik@cdp.net

skype: hanahcdp

www.cdp.net/cities