

ROMA



Roma



**EU-China Cooperation on Innovative and Smart Cities**

**Rome Municipality Cooperation Themes  
under IUC Programme**

**Tamara Lucarelli**

**Development Projects and EU fundings Department**

**EU-China Smart City and Technology Innovation Forum**

**June 11, 2019 - Chengdu**

# The City of Rome

**Population: 2,890,000 residents**

**Area: 1285 km<sup>2</sup> divided into 15 Dist.**

**25,000 points of interest for the historical, artistic and archaeological heritage**

**35.3% of protected natural areas and urban green areas.**

**more than 180 foreign diplomats institutions**

**20 million annual Tourists**

**40 million nights spent in tourist accommodation establishments**



# Economic features

As at March 2018, the city recorded 493.295 registered companies of which 77.819 are locals and 66,377 non-local (**3.408 registered Chinese companies in 2016**).

The vast majority are grouped in the following main industries: **food & hospitality, tourism and rental services, scientific and technological research**

**China is placed among the top 10 Rome's commercial partners**

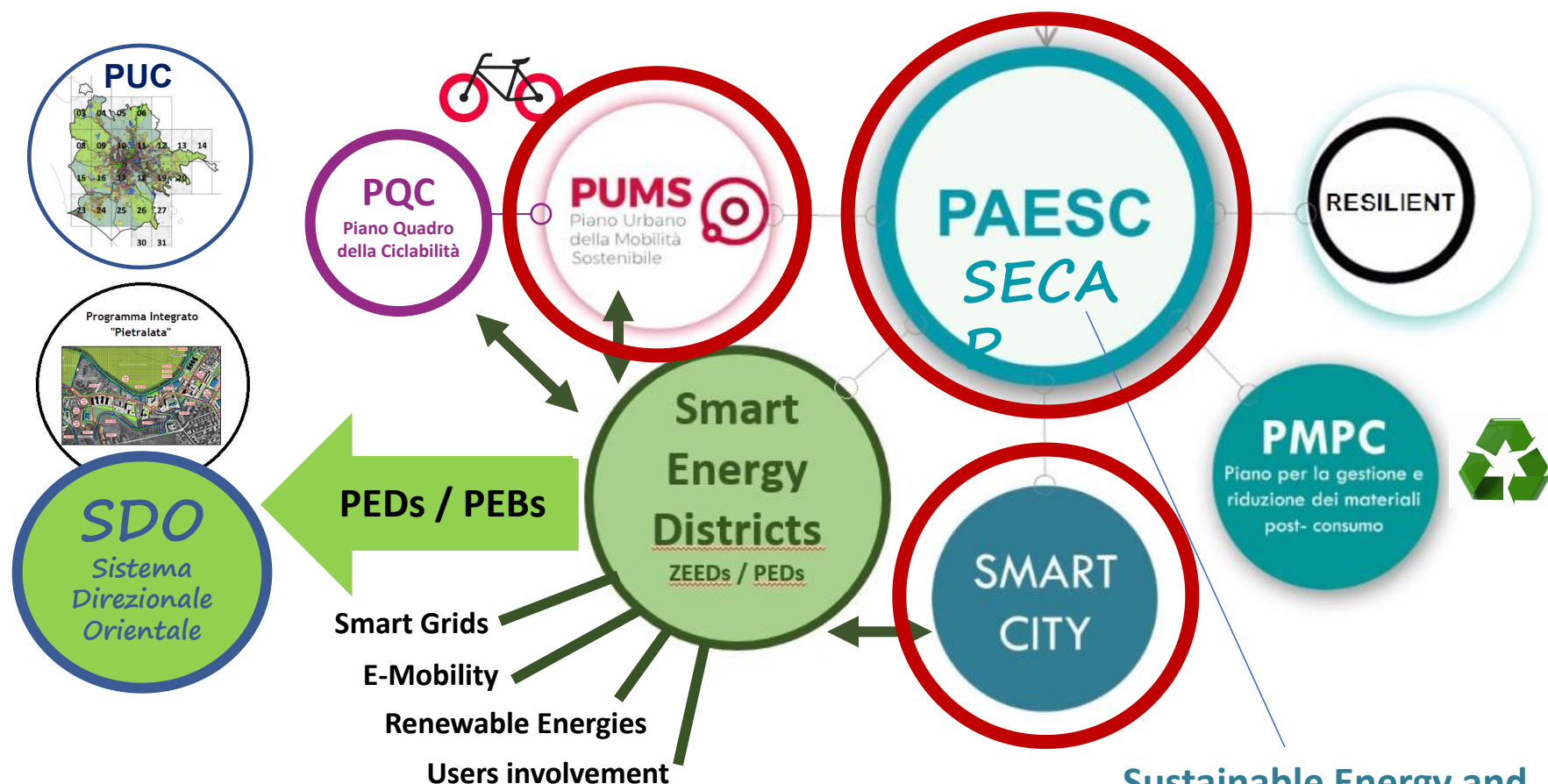
Since 2013, the number of **innovative startups** increased of +109% and marking the following strength points:

- more than 50 smart working centers
- 5 technology transfer centers
- 12 FabLabs (Fabrication Laboratory)
- more than 20 entrepreneurship program.





# Rome Urban Planning & Strategies



# Rome Smart City Plan:

Digital Agenda (adopted on 2017)

Triennial Plan for Digital Transition

Simplification of  
processes and  
Open services for  
all Citizens



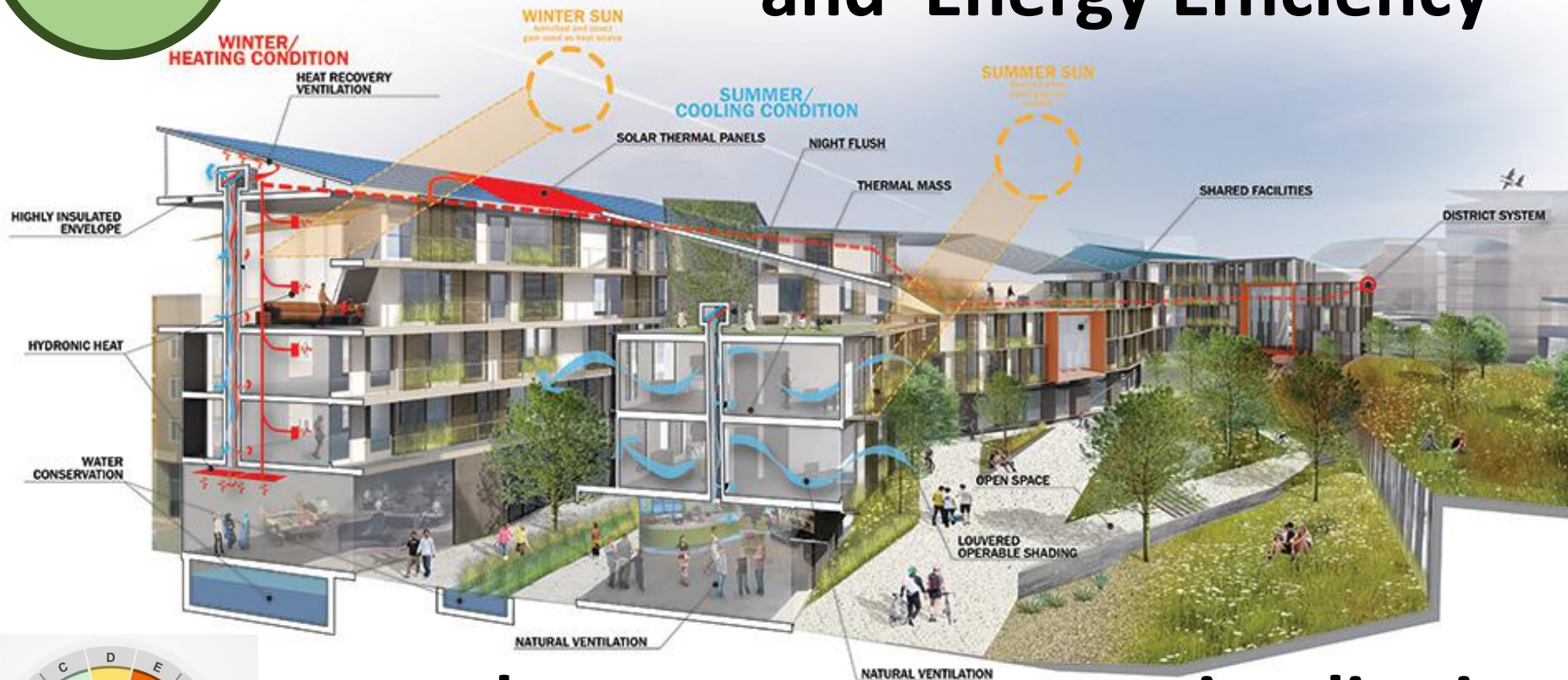






Smart  
Energy  
Districts

# Renewable Energy Sources and Energy Efficiency



## toward smart zero-energy city districts





Smart  
Energy  
Districts

# Positive Energy Blocks within a Smart Energy District







## Age-friendly city topic areas



## CLUSTER COOPERATION APPROACH

Smart city  
& Digital  
Transition

## AGEING SOCIETY

The world is rapidly ageing: the number of people aged 60 and over as a proportion of the global population will double from 11% in 2006 to 22% by 2050.

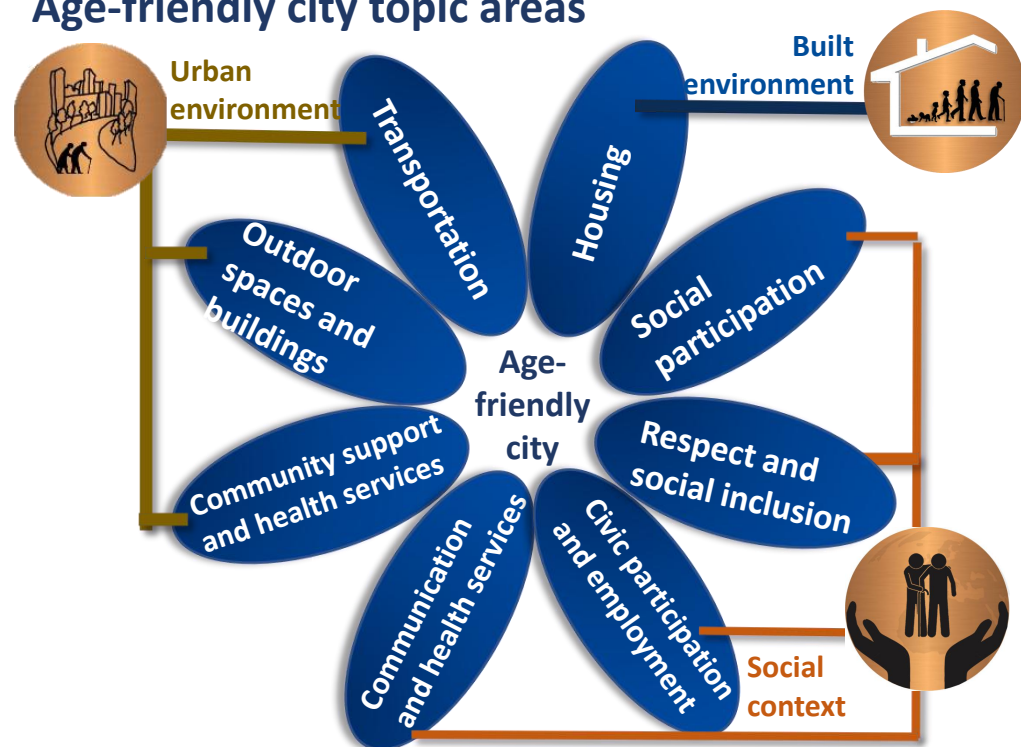
The topics cover the features of the city's structures, environment, services and policies that reflect the determinants of active ageing.

These eight aspects of city life overlap and interact and they are also the determinants of active ageing.





## Age-friendly city topic areas



Smart city  
& Digital  
Transition

## CLUSTER COOPERATION APPROACH

## AGEING SOCIETY

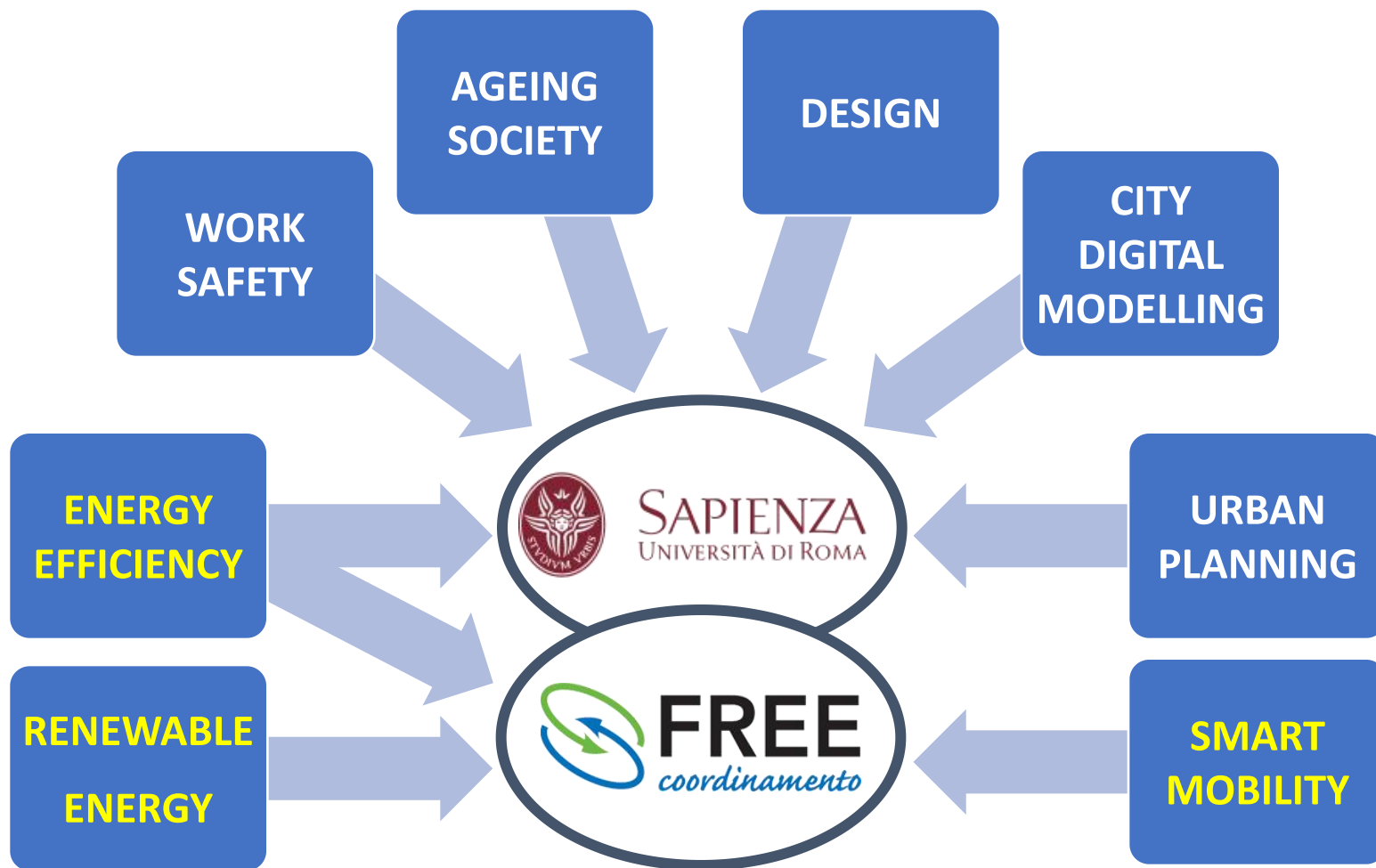
The certification proposed analyzes three main topics:

- Built environment
- Urban environment
- Social context

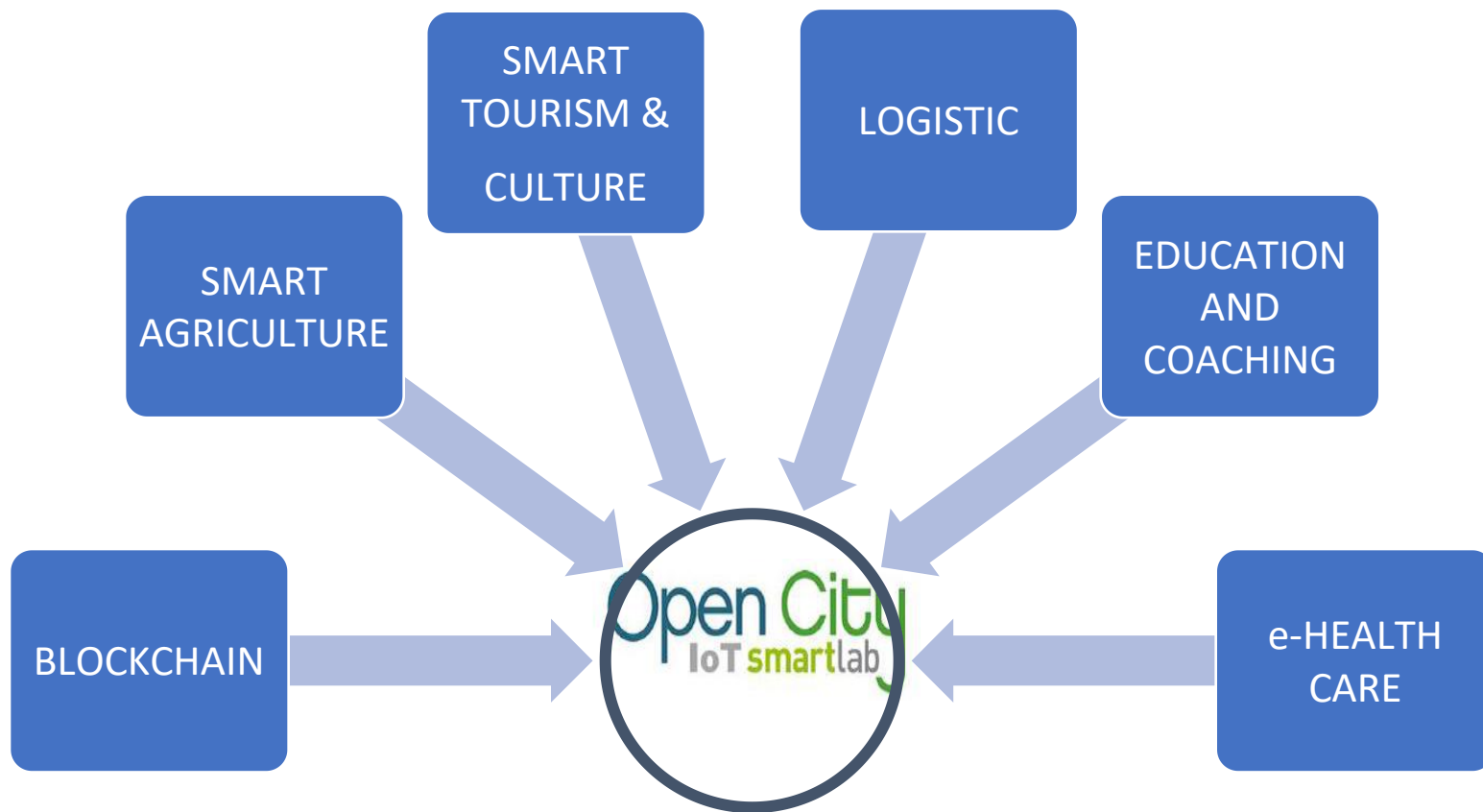
The certification is proposed as a guidelines for an age-friendly architectural design and urban planning.



# Academic and Business Cooperation Topics



## Business Cooperation Topics



**Academic and Business delegation from Rome operating in various fields will participate to the free exchange and one to one meeting.**



# International relations through EU projects

RESEARCH AND INNOVATION			
 <b>CS-AWARE</b> CYBERSECURITY CS-AWARE - Cybersecurity situational awareness and information sharing solution for local public administrations based on advanced big data analysis	 <b>SMARTICIPATE</b> SMARTICIPATE - Smart services for calculated impact assessment in open governance	 <b>SMR</b> Smart Mature Resilience SMR - Smart Mature Resilience	 <b>CITY.RISKS</b> CITY RISKS - Avoiding and mitigating safety risks in urban environments
MOBILITY AND SECURITY			
 <b>ELVITEN</b> ELVITEN - Electrified L-category Vehicles Integrated into Transport and Electricity Networks	 <b>CITYLAB</b> CITYLAB - City Logistics in Living Laboratories	 <b>MyCORRIDOR</b> MYCORRIDOR - Mobility as a Service in a multimodal European cross-border corridor	 CEF programme Rome Urban Core Network Node
 <b>NOVELOG</b> NOVELOG - New cOoperative business modelS and guidance for sustainable city LOGistic	 <b>SYSTEM</b> - SYnergy of integrated Sensors and Technologies for urban sECured environMent		
SOCIAL INCLUSION			
 <b>PROGETTO ROMUNICARE</b> L'integrazione, oltre i luoghi comuni. ROMUNICARE Integration beyond the clichés	 <b>STOP BULLYING</b> BUILD FUTURE! Build Future, Stop Bullying	 <b>Europe for Citizens</b> RoSaE - Rome and Sarajevo for Europe	
ENVIRONMENT			
 <b>Life4Soil</b>		 <b>Ru:urban</b> urban agriculture for resilient cities Roma - A Coruña - Vilnius	

# Investments with EU funding

EUR 110 million of ESI funds



**Sustainable Mobility, Digital Agenda,  
Social inclusion, Administrative Capacity**





**Tamara Lucarelli**

**Development Projects and EU fundings Department**

Via della Panetteria, 18 – 00187 Rome (Italy)

tel. +39 06 6710.78907

[tamara.lucarelli@comune.roma.it](mailto:tamara.lucarelli@comune.roma.it)