
Smart City development driven by technology innovation

Approach of Stuttgart Region – Germany

Thomas Kiwitt, Director Planning



Stuttgart Region

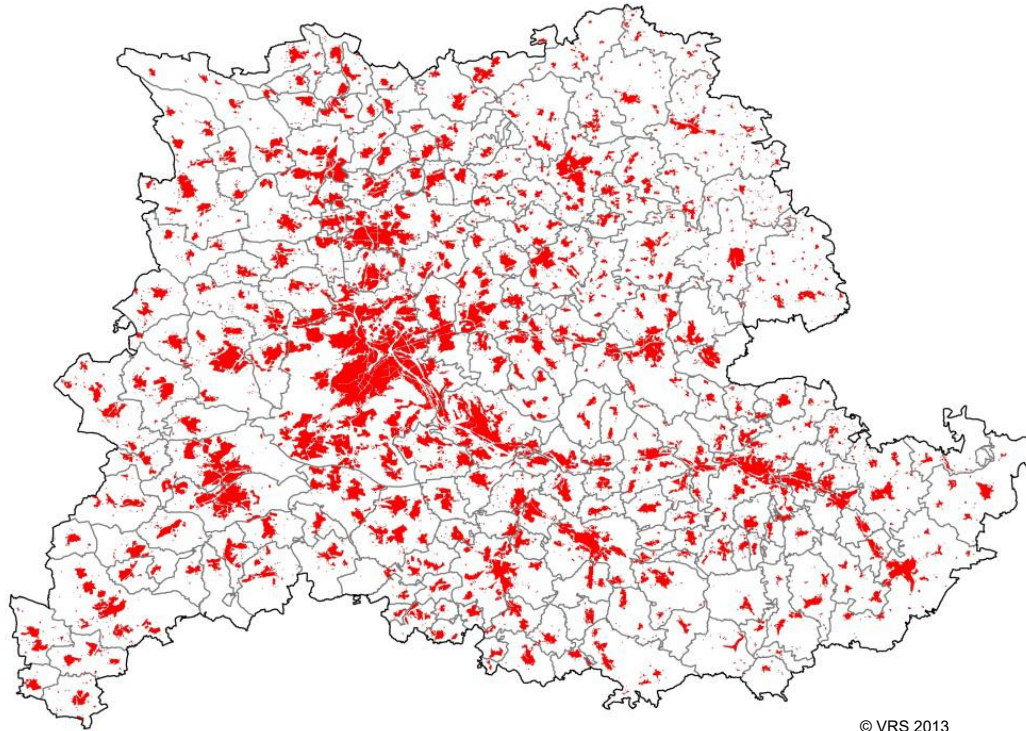
Where / what is this?

500 km southwest of Brussels

- In the heart of Europe...



Not a city – but 179



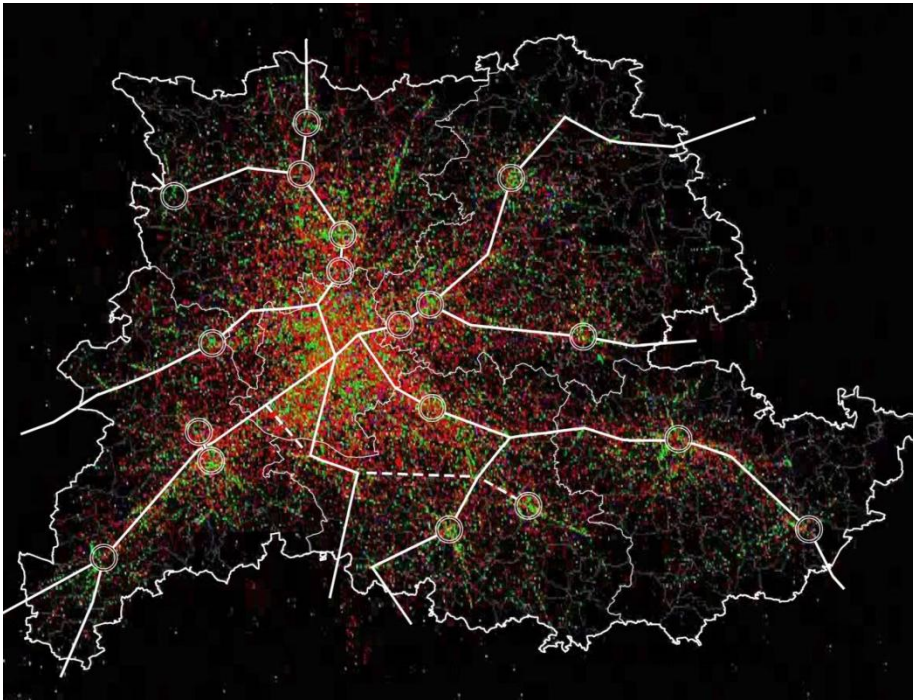
© VRS 2013

- » 6 Counties
- » 179 Municipalities
- » Regional lifestyle
75 % commuters
- » Production chains
independent from
local boundaries
- » Many global players
in international competition
- » Small local units provide
sites and services for
large-scale industry
- » Supra-municipal
coordination by
Verband Region Stuttgart

**No „Smart city“
with stupid hinterland:**

**Commuters, industrial production
Transit, Green infrastructure
Regional scale relevant for
sustainable approach**

Fostering efficient structures and transit-oriented development



- » Provide **reliable data and foresight**
 - > for traffic / emission assessment
 - > regional development

 - » Co-ordination of residential, industrial areas and transport planning of sites and corridors
-

Places for jobs – and a changing industry: Regional scale industrial/commercial areas



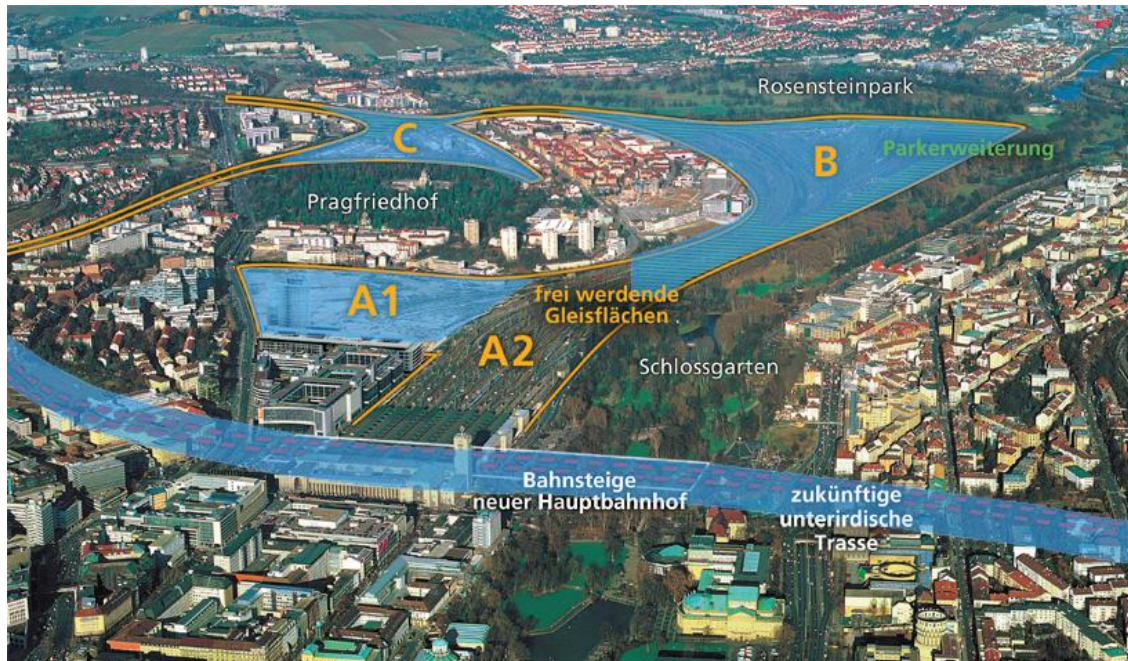
© Thomas Kiwitt



© Thomas Kiwitt

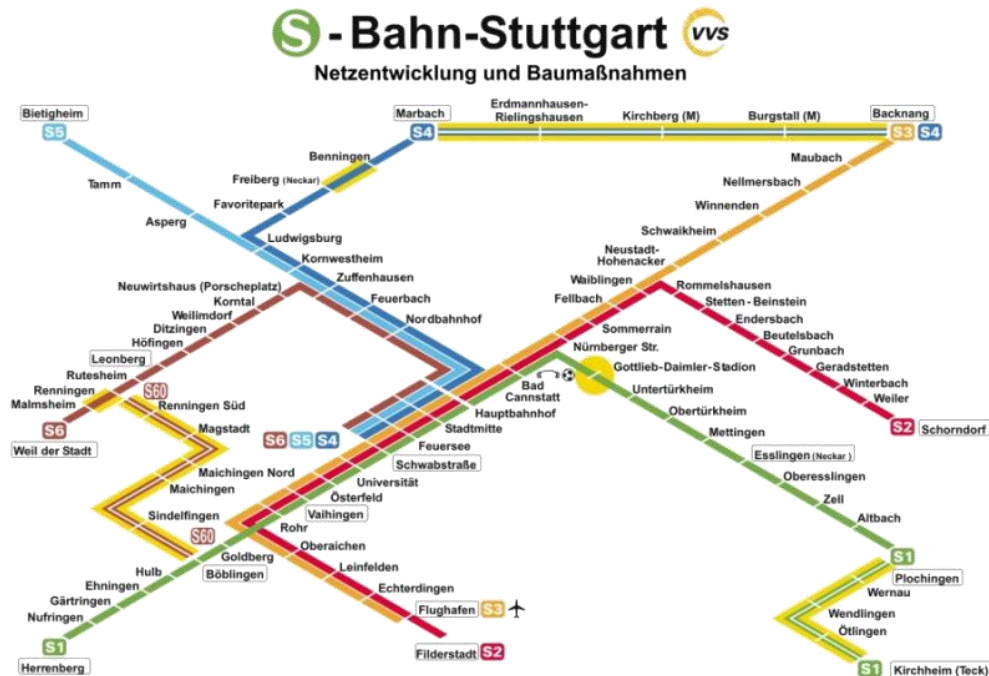
- » Regional economy based on industry
 - » Specific demands for spatial development (e.g. size, access, emissions...)
 - » New products, new technologies, **new facilities for R&D** and production
 - » Protection of suitable sites - Environmental impact assessment
 - » Provide adequate **broad band / fibre connections**
-

Improving the trans-european grid: Stuttgart 21 – Railway + urban development project



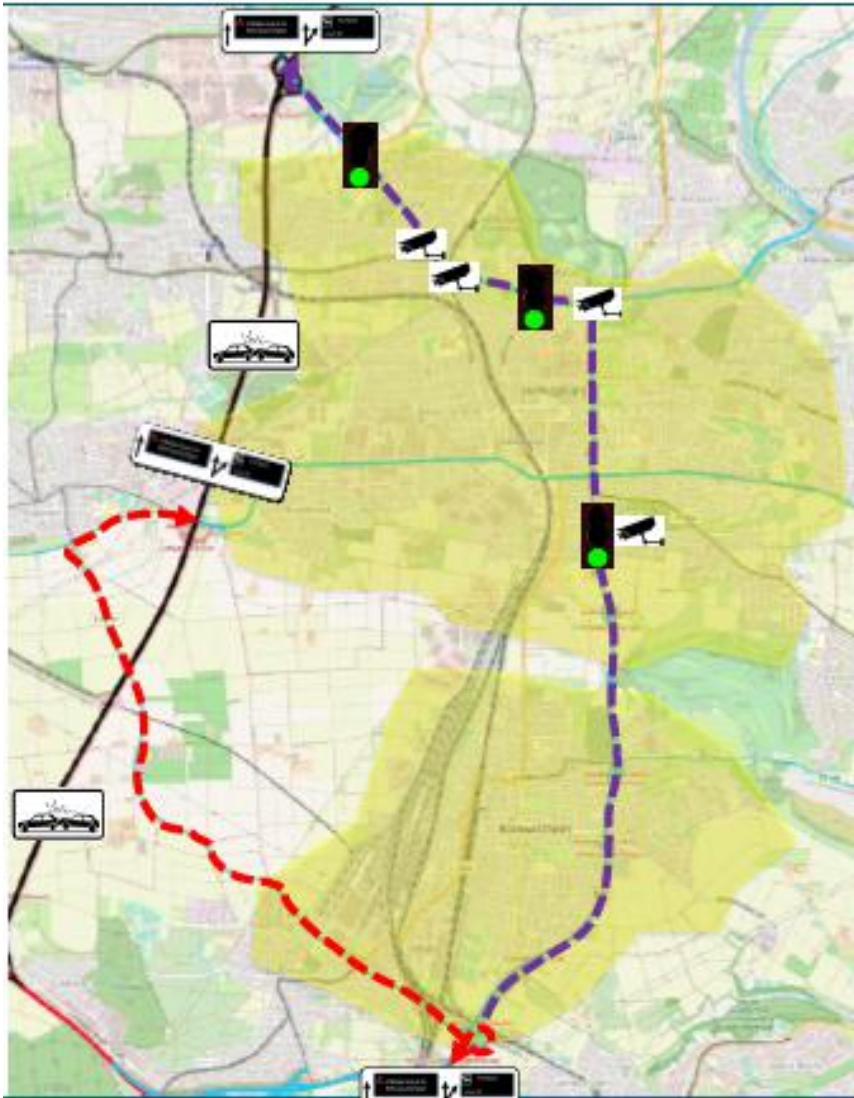
- » Make infrastructure capable for high speed trains
> Changing Terminus to Through station
 - » Faster connection to major metropolitan areas
 - » Gaining highly integrated areas for urban development
Foster innovation by attractive and easy accessible sites
-

Keep Stuttgart Region moving: Extending tracks and services



- » Backbone of sustainable regional development
- » Ongoing projects to extend tracks and stations
- » More trains, higher frequencies, better services
- » Introducing modern **equipment for train control**

Regional transport management across municipal borders



- » Develop **common strategies** with transport authorities and different municipalities
- » **Provide information** on the state of infrastructure (e.g. construction sites), on traffic performance and on strategies performed
- » Coordinate traffic management systems
 - > Efficient use of infrastructure
 - > Reduce immission
 - > provide access

Support innovation: Pilot program for sustainable mobility



- » “Birthplace” of the automobile – OEM, suppliers still important (GDP, jobs)
- » Stuttgart as example for energy efficiency, innovative mobility, R&D, pilot projects
- » 15 m. € program to improve sustainable transport; e.g.
 - Car-pools / car-sharing
 - E-Mobility / Charging infrastructure / driverless vehicles
 - Joint Bike / Bus – concepts / Rental bikes / “pedelecs”
 - easier payment for public transport / “smart cards”
- » Trigger ideas – foster pilot project – support roll out

Climate change



© VRS/Manfred Grohe

- » Rise awareness – political debate
 - » Provide reliable information
 - > Research
 - > Regional climate atlas
 - » Support adaptation
 - > Regional strategies
 - > local plans
 - > pilot projects
-

Healthy, safe and creative environment



- » High quality of recreation / outdoor activities as factor for attracting innovative people
- » Open spaces / small scale municipalities with urban qualities as creative environment

“Smart development” truly regional task

- » Level of action: Innovation needs scale
Quartes, cities, region need co-ordinated strategies
that meet local demands
 - » Governance: No strategy without majority
Smart development needs perspective and political backing
Transparecy and particiation as preconditions for support / acceptance

Regional assembly key player and main driver
 - » Knowledge: Precondition for innovation und smart development
Monitoring as important background
 - » Infrastructure: Efficient use safe ressources – and nerves
No innovation without modern communication and reliable information
 - » Innovation (– capacity):
Progress is a snail –
but ressources and strong support can speed up
-

Innovation makes the world go round!



www.region-stuttgart.org

