

# EU-CHINA LOW CARBON CITIES STUDY 中欧低碳城市研究



27<sup>TH</sup> MAY 2020

Kai Lipsius, Head of Essen Green Capital Agency

德国埃森市 绿色首都机构主任 Kai Lipsius 先生

[Kai.Lipsius@gha.essen.de](mailto:Kai.Lipsius@gha.essen.de), +49 201 88 82300



# ESSEN – PRESENTATION / KEY CHARACTERISTICS

## 德国 埃森市——主要特色



GRÜNE HAUPTSTADT  
EUROPAS

City in Germany, North-Rhine-Westfalia

Essen is part of conurbation Ruhr metropolis

with 5.1 million inhabitants, Essen 面积: 210 km<sup>2</sup>

人口: 591,000 inhabitants

德国城市, 位于北莱茵-威斯特法利亚州

埃森市是鲁尔大都会区(人口510万)的一部分

居住及交通面积: 46 % settlement and traffic area

绿地及开发空间: 54 % shares of open space

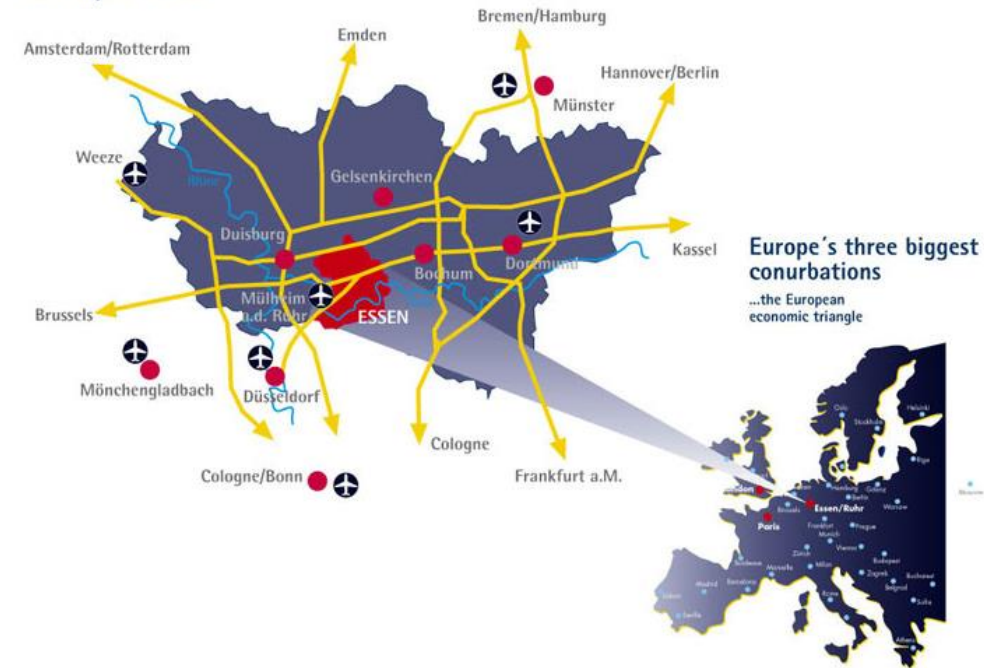
150 years transformation process from rural to

coal & steel town to European Green Capital 017

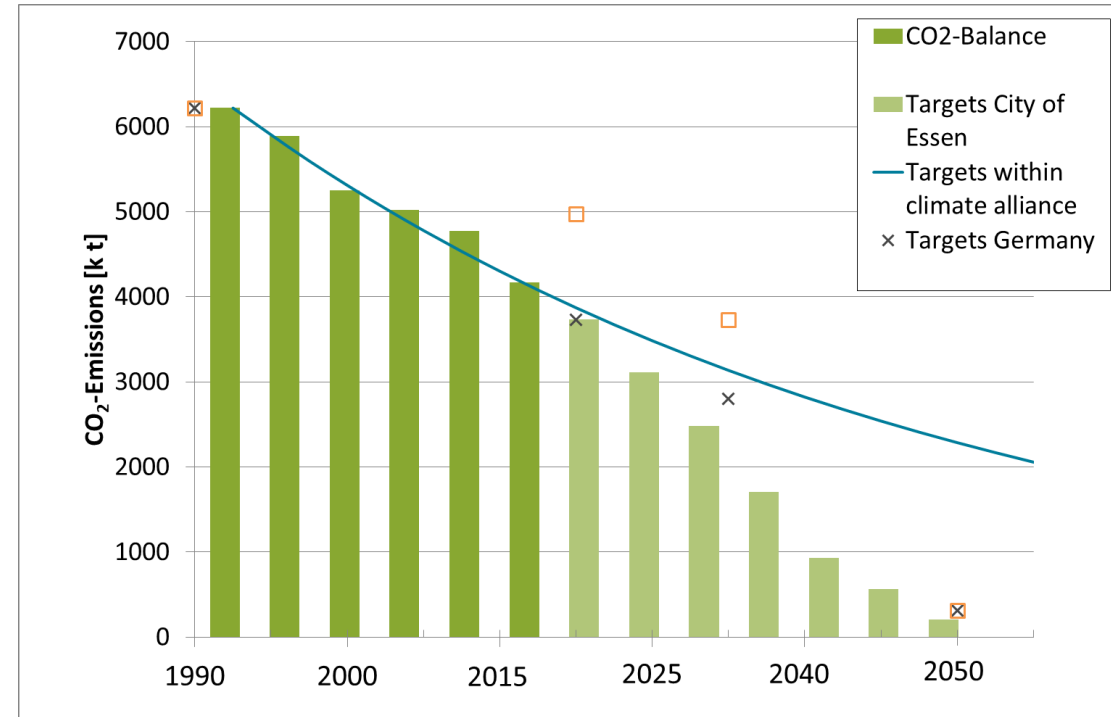
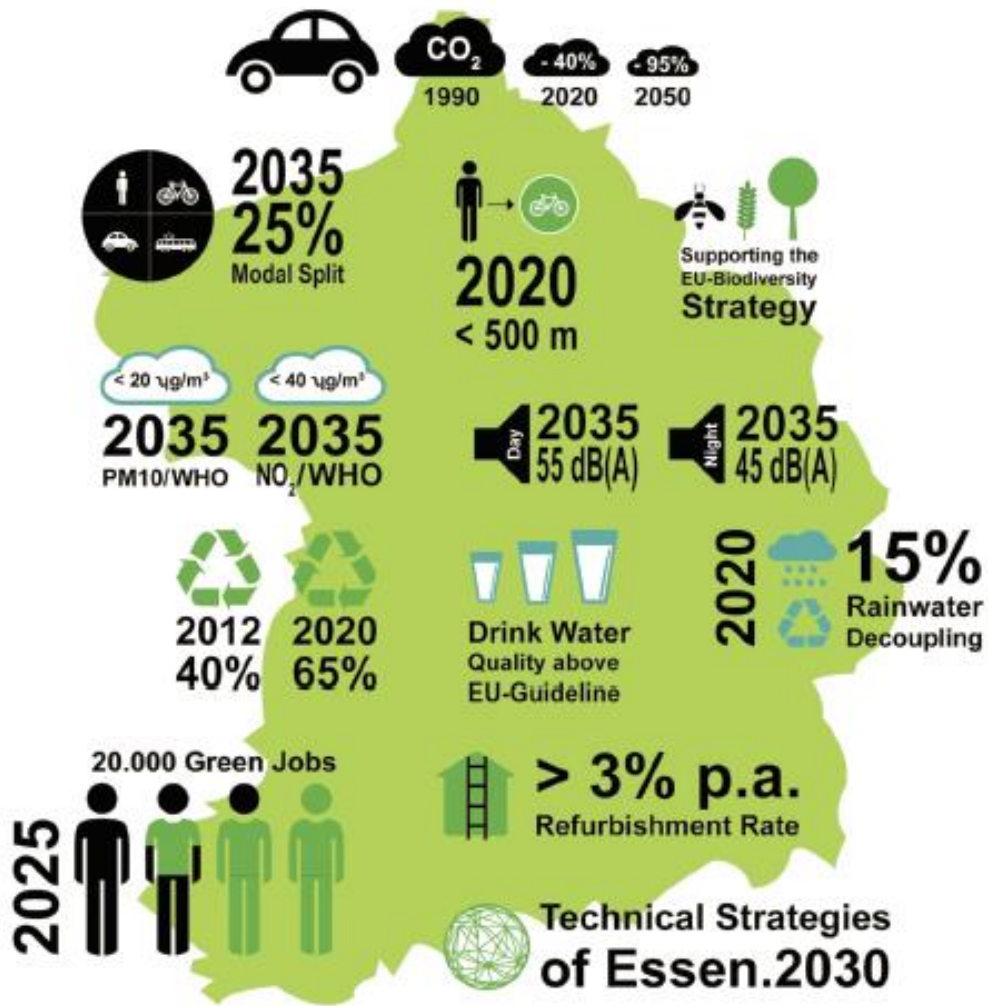
从农村到煤铁小镇、到2017年的欧洲绿色首都, 埃

森的转型, 花了150年。

Metropole Ruhr

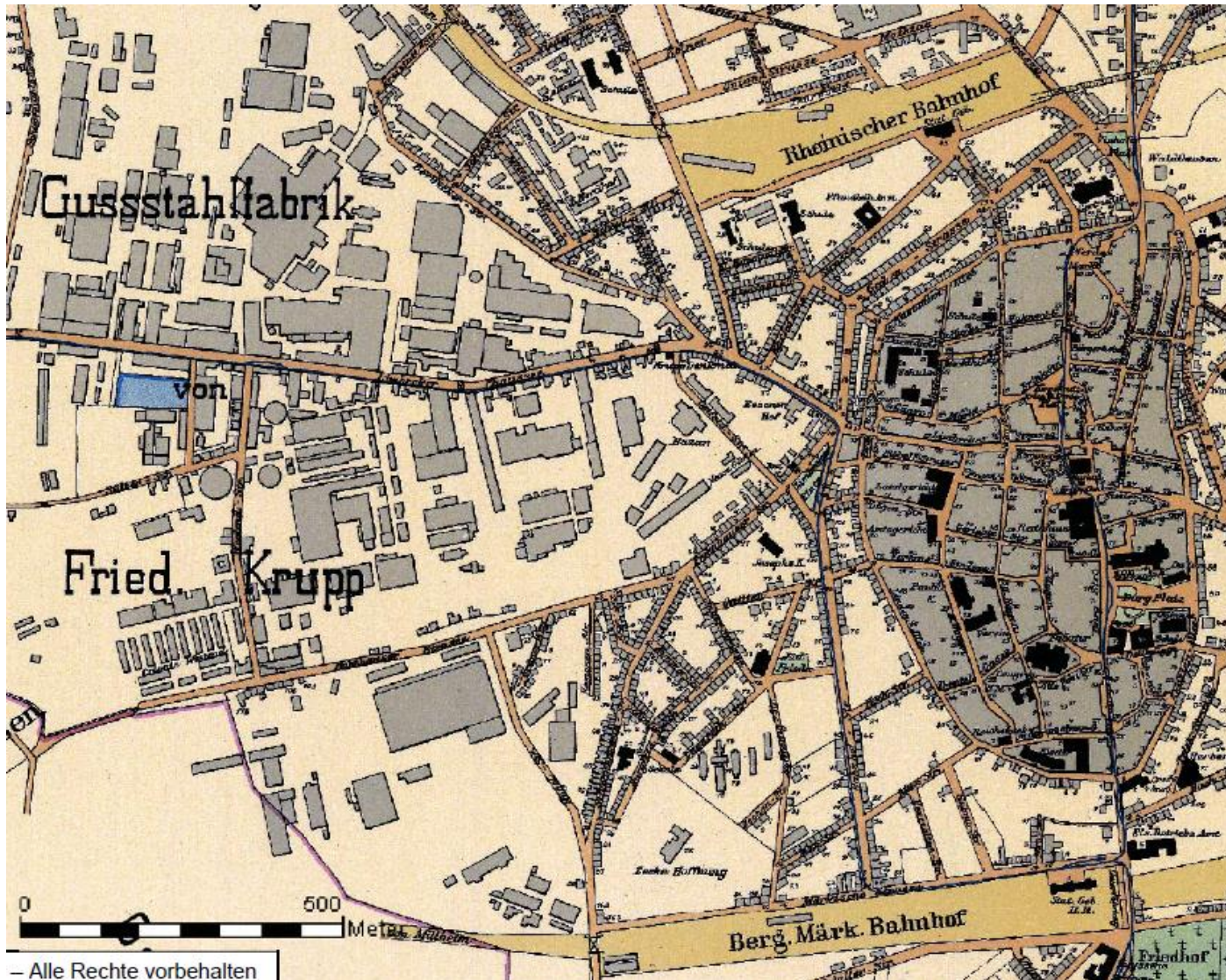


# Targets City of Essen 埃森设定的目标



# The Krupp Belt – 1893/1910/1950

## 克洛普钢铁带的变迁：1893/1910/1950



– Alle Rechte vorbehalten



Krupp Factory 1893

Krupp Factory 1910/1950  
Fotos: Stadtbildstelle Essen

# The Krupp Belt – development

## 克洛普钢铁带的发展

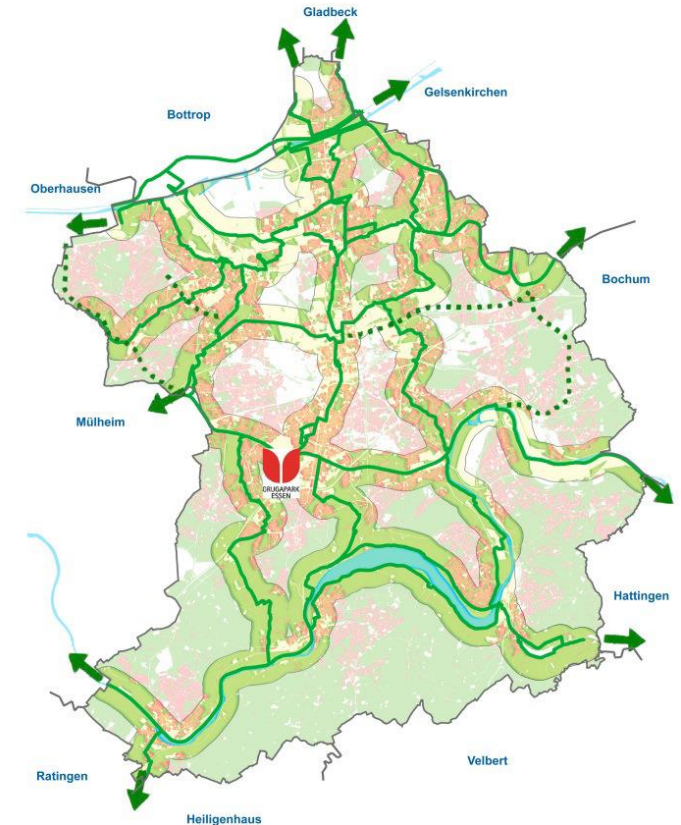




## Emscher Conversion 埃姆舍尔的转型

### New Ways to the Water 新的近水方式

#### Green main routes



- Green-blue corridors along old railway lines, sewage systems, rivers and streams
- 沿老铁路线、污水系统、河流和溪流的绿蓝色走廊
- regional cycle network 区域自行车网络

**Thank you for listening 谢谢您！**

